

Company Profile



**SUSTAINABLE
EFFICIENT
SAFE**



**XLam Manufactures
and Supplies Cross
Laminated Timber (CLT)
& Glue Laminated Timber
(GLT) across Australasia
for use in Conventional
and Mass Timber
Construction Projects.**

COVER IMAGE:
PLANT AND FOOD RESEARCH:
SEAFOOD RESEARCH CENTRE – NELSON, NZ

TOREA STUDIO – TASMAN BAY, NZ

Contents

Overview	6
Capability	9
Mass Timber Construction (MTC)	12
Conventional Construction (Hybrid)	14
Support Services	16
Benefits	20
Markets	22
HSEQ & ESG	24
Our Team	26
Heritage & Future	28



Overview

XLam leads the manufacture and supply of Cross Laminated Timber (CLT) panels and Glue Laminated Timber (GLT) beams and columns for use in conventional and mass timber construction projects across Australia and New Zealand.

Across the government, commercial and residential sectors, our CLT and GLT is routinely specified and used in applications from major construction projects through to individual mass timber buildings.

XLam has secured a market reputation for quality, efficiency and technical support that means we are the natural choice for the production and supply of engineered timber for sustainable and efficient prefabricated mass timber and “hybrid” conventional construction.

CONVENTIONAL CONSTRUCTION (HYBRID)

Our proven approach to conventional construction, adopts a hybrid approach, combining steel and concrete with XLam mass timber CLT panels to enhance sustainability, increase construction speed, improve site safety, and deliver improved project R.O.I.

MASS TIMBER CONSTRUCTION (MTC)

XLam has the capacity and capability to support mass timber construction for large scale and custom projects with CLT and GLT. XLam MTC is sustainable, efficient, and safe supporting contractors and project owners to achieve enhanced project R.O.I.

The XLam team places an emphasis on being responsive and building strong relationships with our customers and we work closely with key clients and project partners including;

- Asset Owners & Developers,
- Building & Construction Companies
- Government Agencies & Departments
- Architects, Engineers & Project Managers

To further support our clients, we can provide advice as well as technical and engineering support from concept to completion to ensure successful project outcomes.

We have worked hard over the past decade to earn our place as a trusted supplier to major construction companies and builders as well as the many architects, engineers, and project managers with whom we have built strong working relationships.

Our clients and project partners share our commitment to improving sustainability, efficiency, and safety in building and construction. With the support of our clients and project partners, we are proud of our proven track record, the value that we add, the diversity and quality of the projects we have built together, and the success that we have shared.

XLAM – SUSTAINABLE, EFFICIENT, SAFE

10 YEAR HERITAGE

Celebrating our 10-year anniversary in 2021, XLam thanked our clients and project partners for their support and acknowledged the efforts of the XLam team in achieving this milestone by applying our proven approach to using CLT & GLT in mass timber and conventional construction applications.

HSEQ

HSEQ is critical to our internal operations as well as being central to the value we add to projects. We are united with our clients and project partners by our common vision and purpose to improve sustainability, efficiency, quality and safety in building and construction.

HYNE GROUP

XLam has a proud heritage and strong ties to the market both in our own right and through our sister company Hyne Timber. This combination means that XLam is vertically integrated into our supply chain and provides both a solid financial and operational footing with a significant footprint as a trusted supplier to the building and construction industry.





Capability

XLam is focused on supporting quality project outcomes and delivering improvements in sustainability, efficiency, and safety. We share this commitment with our clients, and it is what defines both our past and our future.

Our commitment to clients and project partners, the quality of our products and our process, and the support that we provide, means that XLam has a proven track record and a solid reputation in the market.

XLam capability covers manufacturing and supply of Cross Laminated Timber Panels and Glue Laminated Timber as well as providing end-to-end technical support, advice, and site services.

As part of the Hyne Group, XLam is a sister company to Hyne Timber which guarantees our feedstock and enables vertical integration with our mills, providing production efficiency and certainty of supply for our customers.

Our technical advice covers the complete spectrum of the construction process from planning through to execution. Working together with project partners such as Architects, Engineers and Project Managers, the XLam team includes qualified industry experts in those same key disciplines (Architecture, Engineering, Project Management) who provide specialist technical and symbiotic support through the phases of; Feasibility & Advisory, Design & Engineering, Planning & Permits, and Logistics, Installation & Onsite Services.

We have established state-of-the-art manufacturing plants for CLT and GLT in Australia and maintain a large facility in New Zealand where we stage our panels ready for the local market and perform important finishing, embellishing and value-add works.

The XLam CLT plant was constructed with an investment of over \$50million, covers 16,000m² of floor space and has an annual production capacity of 60,000m³ of CLT. The location of our CLT plant was chosen strategically based on the proximity of our mills, and access to major transport hubs that enable supply across Australasia.

As one of the southern hemisphere's largest manufacturers of GLT: Hyne Timber, our sister company, has been producing GLT for over 40 years. In 2019 the GLT facility underwent a \$24million upgrade and now has a footprint of over 4000m². The Glulam Plant is strategically located next to the Hyne Group Tuan Mill to optimise feedstock availability to ensure production reliability.

We utilise our capability and expertise to work as a trusted advisor and supplier to our customers and project partners, fostering long-term relationships, and encouraging open dialogue between our customers and our team so we can share our learning and expertise and continue to best meet the needs of the market.

MANUFACTURING

Manufacturing and finishing in Australia and New Zealand respectively, drawing on local feedstock and sourcing from international suppliers, we make ongoing and significant investments in research and development, in plant and equipment, and in our people.

COVERAGE

We have a distribution network and a project footprint that covers New Zealand and Australia and draw on vertically integrated feedstock giving our customers and project partners certainty of supply.

APPROACH

Our approach ensures that we stay abreast of technology and innovation as well as continuing to supply the quality CLT and GLT and advice on which we have built our reputation.



Our expertise supports the use of CLT & GLT in both “pure” Mass Timber builds and in “hybrid” Conventional Construction projects combining CLT with Steel & Concrete.

Mass Timber Construction

We have the capacity and capability to support Mass Timber Construction (MTC) for large scale and custom projects with XLam CLT and GLT.

The engineering and manufacturing process for CLT and GLT creates structural timber panels, beams and columns that are produced to the designed load and design specifications that are required for each building, optimising structural performance.

XLam CLT consists of large building panels made from solid timber board laminated together in cross-layers to form billets.

Due to the opposing directions of each laminated board, our CLT panels are some of the strongest solutions in construction, with a very high strength-to-weight ratio.

MTC is typically suitable for new buildings of up to 10 storeys high as well as for vertical extensions for existing structures. Used in structures as diverse as; corporate offices and aquatic centres, child care facilities, schools, through to social housing townhouses and architect designed statement homes, MTC is an inspirational and practical building methodology.

Panel sizes are available up to 16m x 3.4m and panel thickness is variable depending on load and span. Panel configuration is 3, 5 or 7 layers, with cumulative panel thicknesses between 90mm and 310mm. XLam technical guides are available, and our technical team works closely with our clients and project partners to provide design and engineering support.

Functional, sustainable, and beautiful, we have manufactured and supplied CLT and GLT for a broad range of buildings and applications with single and multi-storey configurations across the government, commercial and residential sectors.

Project suitability for MTC is determined by several factors and can be successfully influenced and managed through the design and engineering phases with minimal interventions that maintain the integrity of the vision for the building while enhancing outcomes in building efficiency, sustainability, site safety and reducing construction costs.

Applying our technical expertise and production capability in Mass Timber ensures a quality project outcome. We are proud to have worked with many repeat clients demonstrating the success of XLam MTC and the benefits delivered.

SUSTAINABLE, EFFICIENT, SAFE



OAKLEIGH SOUTH CHILDCARE CENTRE
- OAKLEIGH SOUTH, VIC

Conventional Construction

XLam supports clients utilising a conventional construction methodology who are seeking to secure the benefits of a hybrid approach, combining CLT with Steel and Concrete.

Our proven hybrid approach to conventional construction, combines traditional steel and concrete with XLam mass timber to enhance sustainability, increase construction speed, improve site safety, and deliver improved project R.O.I.

We have the capacity and capability to support large scale construction projects with Mass Timber building components including CLT and GLT.

Our CLT and GLT is code compliant and thoroughly engineered. We can supply all required reports and specifications relating to fire, structural, and acoustic performance.

XLam CLT and GLT has been proven in a diverse range of large-scale conventional/hybrid construction projects including; commercial office towers and corporate HQs, research centres and landmark buildings, community and civil infrastructure, healthcare and aged care, schools and educational facilities, mixed-use developments, vertical extensions, industrial applications, apartments and residential construction.

Where projects have been designed for construction in steel and concrete, XLam provides advice and guidance on converting elements of the building to support the use of Mass Timber components. For projects that are at the concept design phase, XLam supports the development of a hybrid construction approach that supports a greater use of Mass Timber within an overarching conventional construction methodology.

This flexibility, and the application of our expertise, enables XLam clients to adopt elements of mass timber within their conventional structures to gain the benefits MTC provides, while maintaining their overall construction approach, processes, and skill-set.

There is a very broad suitability for the use of CLT and GLT with steel and concrete and XLam has the data, experience and use cases to demonstrate how we have worked with clients and project partners to enhance project outcomes, reduce construction costs, improve the sustainability of built form, improve site safety, and increase the speed of construction.

SUSTAINABLE, EFFICIENT, SAFE



Services & Support

XLam provides focused support from our expert team, providing access to our expertise and experience through the whole project lifecycle to support quality project outcomes and deliver enhanced R.O.I.

Depending on the specific project requirements, we provide advice and guidance relating to using CLT incorporated with Steel and Concrete in a “hybrid” approach to Conventional construction, or we can produce and supply XLam CLT and GLT for a full Mass Timber build.

Our technical team can be engaged to work closely with our clients and project partners to provide technical support, advice, and guidance across all project phases to ensure the benefits of mass timber are realised for each project.

Importantly, an early design consultation with XLam will optimise the performance of CLT, dealing with considerations such as economical panel sizes, orientation, tolerance for assembly, appearance, durability, buildability, and construction sequencing.

XLam can provide comprehensive end-to-end design and engineering for a project however, our role typically is defined by working as part of the project team to support the lead architects and engineers with the specialist CLT and GLT knowledge they may require.

Feasibility & Advisory

XLam welcomes the opportunity to provide advice and support during the concept design phase where we can add the benefit of our experience to assist in shaping the project to gain the maximum benefit from the application of mass timber. This phase includes an early estimate of likely CLT and GLT supply costs to aid in project planning.

Planning & Permits

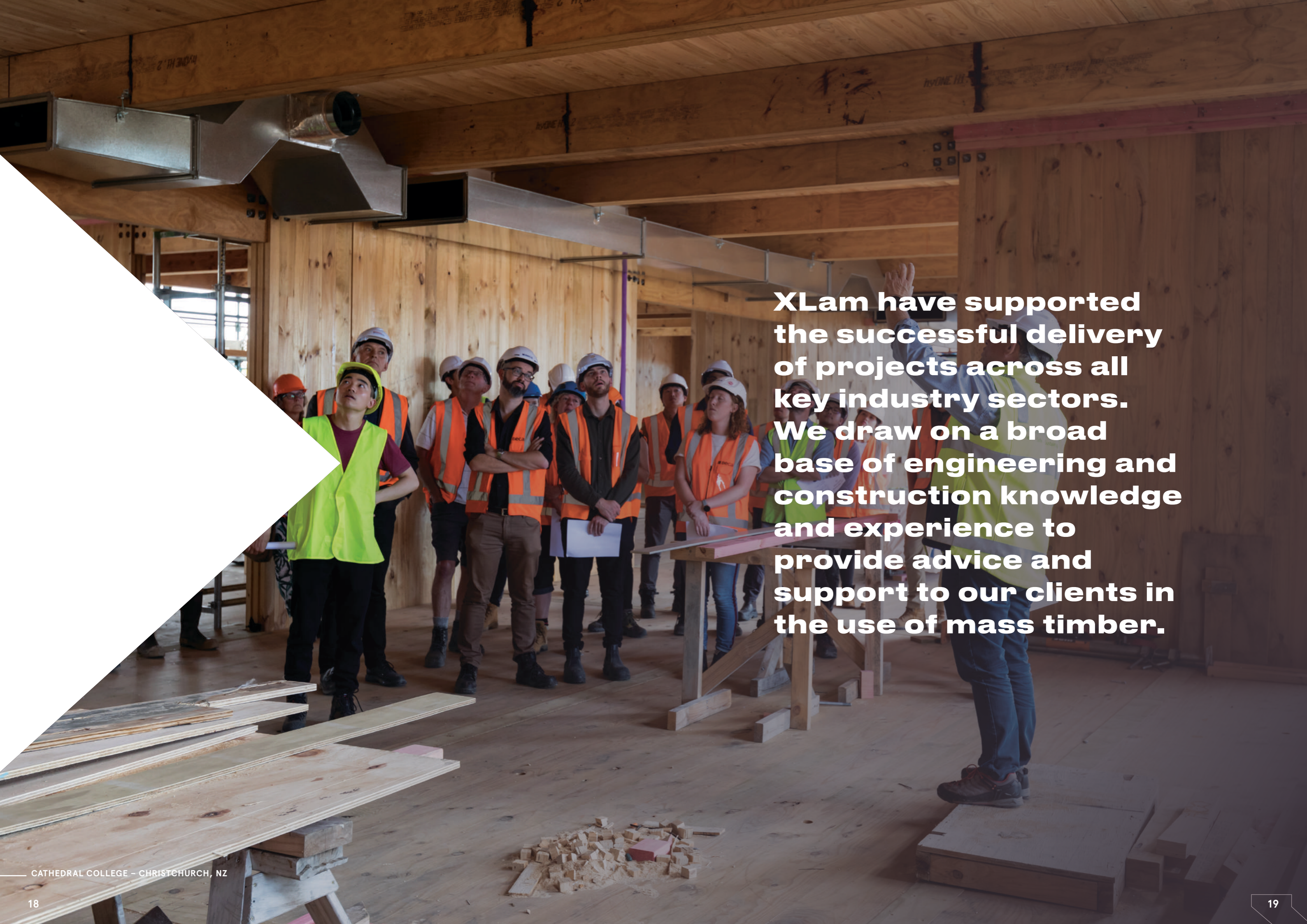
XLam can support clients and project partners through the planning and permit process by providing technical data and demonstrating the code compliance, structural and fire performance of CLT and GLT. In addition to making our test data available we will provide relevant use cases to assist our clients in securing planning permission and the appropriate building permits.

Design & Engineering Support

Following the concept design, XLam supports clients during the detailed design and engineering phases through both our technical guides and our practical experience using mass timber. During design development, XLam will advise on structural considerations, panel thicknesses and spans, CLT layout and connection details.

Logistics, Installation & Site Support

XLam has a proven track record of working closely with our clients and their contractors to ensure the seamless integration of our mass timber products with the building and construction process. This includes value added services, installation, advice, workflow management and addressing specific questions for the site team.



XLam have supported the successful delivery of projects across all key industry sectors. We draw on a broad base of engineering and construction knowledge and experience to provide advice and support to our clients in the use of mass timber.

Sustainable, Efficient & Safe

Using XLam CLT and GLT increases site efficiency, improves sustainability, reduces capital and construction costs, enhances site safety, and improves project R.O.I.

RENEWABLE PLANTATION TIMBER: XLam CLT timber stock is sourced locally from sustainably managed plantations. Our chain of custody is PEFC certified, meaning our products have been sourced from sustainable, Responsible Wood (PEFC) certified resources.

DECLARE COMPLIANT: Declare is a global environmental standard. We have met stringent standards to receive Declare Red List Free labels for both our treated and untreated panels.

LIVING FUTURE INSTITUTE: XLam CLT panels are compliant with the Living Future Institute of Australia's Living Building Challenge.

CARBON SEQUESTRATION: Using timber as a primary building product ensures carbon sequestration. When a tree is harvested, the carbon it has sequestered during its natural life cycle is retained within its cellular structure. A timber building, in effect, locks up the carbon it has previously stored – providing a perfect environmental solution for the future.

RAPID CONSTRUCTION IMPROVES R.O.I.

Since inception, XLam has led the market in the application of mass timber across all industry sectors in mass timber as well as in "hybrid" conventional construction. R.O.I. is improved through enhanced construction efficiency, where the use of off-site prefabricated CLT panels provide important practical benefits, as well as improved financial performance that is linked with achieving faster construction.

Improving construction efficiency and reducing the amount of time spent on site has important benefits for builders, developers and asset owners including;

- Rapid construction reducing capital and funding costs
- Higher revenue from greater turnover with the same labour resources
- Off-site manufacturing mitigates the impact of weather and protects construction schedules
- Reduction in time on site providing direct operational cost savings
- Earlier handover improving customer satisfaction and project yield
- Enhanced operating, financing, and profitability ratios
- Improved project R.O.I.

LIGHTWEIGHT AND STRONG, CLT ENHANCES BUILDING EFFICIENCY

CLT has a superior strength to weight ratio when compared to concrete or steel, offering significant advantages in weight reduction.

This allows for savings to be made on other structural elements such as slabs and frames, allows for applications such as vertical extensions on existing buildings and enables greater quantities of material on softer ground.

IMPROVING SITE SAFETY

XLam place an emphasis on health and safety across all our activities and are proud that our building products contribute to safer construction sites.

The prefabricated nature of mass timber has proven positive impacts on site safety for our customers reducing the number of processes to be performed at site, reducing headcount onsite, and providing a safe approach to achieve rapid construction while reducing risk.

XLam places an emphasis on safety, and we support our clients in the on-site application of MTC to ensure integration with their existing OH&S systems and processes.



XLAM SUPPORTS A SUSTAINABLE FUTURE.

XLam makes an important contribution to improving environmental performance of the construction industry through the manufacture and supply of sustainable building products that create "greener" buildings.

Markets

XLam proudly supports Government, Commercial, and Residential construction projects. Our capability and the breadth of application of XLam CLT & GLT means that we supply projects in Australia and New Zealand across key industry verticals.



PLANT AND FOOD RESEARCH: SEAFOOD RESEARCH CENTRE – NELSON, NZ

Commercial

INDUSTRY EXPERTISE THAT DELIVERS INCREASED R.O.I.

Our clients in the commercial sector include asset owners, developers, corporations, and building and construction companies.

The commercial clients and project partners who specify and choose XLam CLT and GLT for their project value the peace of mind that comes from working with industry experts who can provide proven approaches and support to address specific project challenges.

As a trusted supplier in the commercial sector, we place an emphasis on providing technical advice and assisting with value-engineering during the design phase, working collaboratively with architects, engineers, and project teams to deliver the most cost effective, efficient, and elegant project outcome.

Working to clear project milestones we have the capacity and proven capability to deliver.

Government

BUILDING SUSTAINABLE INFRASTRUCTURE & FACILITIES TO BENEFIT THE COMMUNITY.

XLam has a proven track record working with government departments, agencies, and statutory authorities across Australia & New Zealand.

Our work has encompassed a broad spectrum of government offices, community infrastructure, social housing, educational institutions, and emergency services projects.

We understand the importance of utilising sustainable building materials and creating inspiring and functional community buildings and civil infrastructure that have a lasting positive impact and legacy.

Our approach, experience, and focus on stakeholder engagement means that we are well placed to service our clients and deliver projects in the government sector.



ADELAIDE OVAL HOTEL – ADELAIDE, SA



SALISBURY STREET EXECUTIVE APARTMENTS – CHRISTCHURCH, NZ

Residential

EFFICIENT & EFFECTIVE BUILDING METHODOLOGY.

Mass timber is ideally suited to volume builds in the residential sector for clients that are focussed on sustainability, efficiency, safety and improving their project R.O.I.

We work directly with developers, major builders, architects, and engineers to create sustainable and efficient homes, townhouses, social housing, and apartment towers. Working with our clients and project partners, we are also able to supply mass timber for individual statement homes and residential projects.

Our work in this sector is underpinned by the benefits of mass timber in delivering site efficiency and reduced build times from a sustainable building material and the contributions we make to site safety.

HSEQ & ESG

XLam makes a strong commitment to health & safety, quality, and environmental, social, governance which are central to our culture activities, and approach.

A positive and proactive approach to HSEQ & ESG is a daily part of our lives and is integral to our operation and our interaction with the broader community through our activities and products.

HSEQ & ESG are central to the values and activities of XLam and the building methodology we enable. This means that we view we view HSEQ & ESG through both internal and external lenses.

XLam places an emphasis on HSEQ across all our activities and take a market leading approach to Environmental, Social, Governance in our operation and the products, knowledge and thought leadership we bring to the building and construction industry.

Mass timber is a renewable resource, and we empower our team in safety, sustainability, and quality. The mass timber building methodology we support through the production and supply of CLT and GLT has a direct and positive impact on improving site safety, reducing the environmental impact of built form, and delivering quality project outcomes.

Across our HSEQ and ESG programs, although we are advanced in our thinking and our approach, we never rest on our laurels and make an ongoing commitment to continuous improvement to continue to lead the market and best support our customers.

HEALTH & SAFETY

We support health and safety empowerment at all levels of our organisation, in the markets we support, and in the communities that we serve.

We have developed and continually reinforce a positive safety culture with rigorous safety protocols and monitor lead and lag indicators to drive the correct safety behaviours. Across our team we strongly believe that there can be absolutely no compromises with safety, and this is reflected in everything we do.

Our approach to safety reflects best practice in both manufacturing and construction industries. This means that we have proactive programs focussing on prevention, regular safety training and education, toolbox talks to highlight and reinforce appropriate safety behaviours, and an open culture that encourages a positive safety dialogue at all levels of our organisation.

The off-site manufacture of mass timber has proven positive impacts on site safety for our customers reducing the number of processes to be performed on site and providing a safe approach to achieve rapid construction while reducing risk.

QUALITY & TECHNICAL EXPERTISE

We lead the mass timber market and proudly celebrate a 10-year heritage.

We have highly developed and fully integrated quality systems and work to specific and tightly controlled tolerances to meet structural and performance requirements in the CLT and GLT we produce.

A significant and ongoing investment in R&D means that we have refined and perfected our manufacturing process and the CLT and GLT we supply. Our approach ensures that every product we deliver meets our stringent quality control standards.

We understand that quality has critical flow-on impacts for our clients and our rigorous approach ensures that production, delivery, and construction schedules proceed as planned. The outcome is that XLam has built an enviable reputation for quality across our products and the services and advice we provide to our clients.

Quality is reinforced by our technical team who all work closely with our clients and project partners to ensure quality project outcomes. We provide technical support, advice, and guidance, as well as access to R&D and compliance data, across all project phases to ensure the benefits of mass timber are realised for each project.

ENVIRONMENT

We produce sustainable and environmentally friendly building products and our role in protecting the environment is something that we take very seriously.

Operationally, a positive track record with no breaches means that our activities and approach continue to meet the expectations of our clients, statutory authorities, and the broader community.

Environment and sustainability go hand-in-glove with both the philosophy and reality of building with CLT & GLT in both mass timber and conventional/hybrid builds.

Mass Timber (CLT & GLT) is a highly sustainable building product and embodies one of the lowest embodied energy levels compared to similar building products. The timber used in building effectively locks up the carbon it has previously stored throughout its growth making timber a natural choice to protect the environment.

Our feedstock is sourced from renewable plantations and is both PEFC certified and Declare Compliant. PEFC means our products have been sourced from sustainable, Responsible Wood (PEFC) certified resources. Declare compliance means that we have met stringent standards to receive Declare labels for both our treated and untreated panels.

The Hyne Group's log resources are sourced from sustainably managed plantations in Queensland, New South Wales, and Victoria. These forests are independently certified for compliance with AS 4708-2007 under Responsible Wood schemes. Every Hyne Group product also has a full chain of custody certification which ensures that our products have been sourced from sustainable, Responsible Wood certified resources.

Where we source external components and production inputs, we rely on the integrity of our supply partners whom we hold accountable to a meet community expectations and relevant industry standards. Our audit and risk management process has evolved to identify, mitigate, and address key environmental and societal factors in our supply chain.

COMMON VALUES

XLam offers a professional, diverse, and dynamic working environment and our team share a common customer and community focussed set of values.

WORKPLACE EQUALITY

XLam are committed to eliminating all forms of discrimination. We embrace diversity and strongly encourage applications from people from culturally and diverse backgrounds, and people with disabilities.

Our Team

Industry experts, trusted by our clients and respected by our peers. XLam has the depth of experience and the capacity to deliver.

XLam has an experienced and highly trained team – we are motivated to ensure that we deliver a superior product to the market and our clients get professional technical advice and support through every stage of the project cycle.

Our internal team includes industry professionals that are respected by their peers and our staff have worked in key roles across the construction industry.

We provide a high level of service to our clients, and this means that, in turn, we expect a lot from our team. We are proud that the XLam team regularly rise to meet the challenges of the modern construction and manufacturing environments to support our clients.

Our growth has reflected the confidence our customers have placed in XLam and we make a shared commitment to providing technical expertise, superior service and quality project outcomes for our clients.

We reflect and embrace the six values of our sister company Hyne Timber. These six values – safety, collaboration, be proactive, be responsible, respect and honesty – define how we treat each other and how we work together. We are committed to an inclusive environment where people feel comfortable to be themselves. We want our people to feel that all voices are heard, all cultures respected, and all ideas valued.

We invest in the growth and development of our people and, as we continue to grow, we recruit from the local communities in which we are based as well as from further afield. As such, our team reflects a diverse mix of people, cultures and points of view and we encourage individual expression within a supportive and open-minded corporate environment.

To best serve our clients and deliver the best project outcomes, we are dedicated to training and development of our people to keep pace with changes in building and construction technology as well as statutory requirements.

We are proud that our approach means that we have many long-term members of our team and that we enjoy stable industrial relations and deliver consistently high product quality.

Our approach means that our customers benefit from our expertise and our efforts and energies are always directed into the things that matter to our customers – quality products, reliable supply, innovation, research and development, support, service and R.O.I.



INDUSTRY KNOWLEDGE

The XLam team has relevant industry knowledge and experience – this is important to our customers, our operational efficiency, our relevance, and our future.

TRAINING & DEVELOPMENT

We invest in the training and development of our team ensuring that each person has the specific job skills and support to perform their role effectively.

TEAMWORK

In the same way that XLam CLT and GLT play an important part of a larger project, each member of our team plays their role to ensure we always deliver on our promises and meet the expectations of our customers.

Heritage & Future

XLam has a proud heritage and is committed to a promising future for MTC.

Since 2011, XLam has been manufacturing and supplying CLT and GLT to building and infrastructure projects across Australia and New Zealand.

We have grown with our customers and with the market – evolving from a start-up business into the largest manufacturer and supplier of CLT in Australasia and a supplier to a wide range of government, commercial, and residential projects.

XLam CLT and GLT has been used in projects covering every major industry vertical, from civil infrastructure and community facilities, through to major high-rise commercial construction projects, inspiring landmark buildings, social housing and architect designed statement homes.

A quiet achiever, XLam places an emphasis on the consistent and reliable supply of our products, supporting our customers with technical advice, underwriting construction schedules with reliable supply, and ensuring project timelines and R.O.I. are realised.

We heavily invest R&D, to bring meaningful product developments and innovations to the market and work closely with our customers to meet their current and future requirements.

XLam measure our success in the success of our customers and the projects we help them deliver and we are proud to be counted as a leading supplier and trusted partner to our clients and project partners.

We continue our focus on building relationships, capability and capacity to support the market and meet the demand for CLT and GLT as an efficient, sustainable and safe building product.

Working Together

Adopting a partnership approach, we work with clients and project partners to deliver both inspiring and functional buildings using MTC as a safe, efficient, and sustainable building methodology.





XLam is proud to support our clients and project partners in the use of CLT & GLT as efficient, safe, and sustainable building products.



**XLam Manufactures and Supplies
Engineered Timber Panels (CLT) and
Glue Laminated Timber (GLT) across
Australasia for use in Conventional and
Mass Timber Construction Projects.**

xlam.com.au